

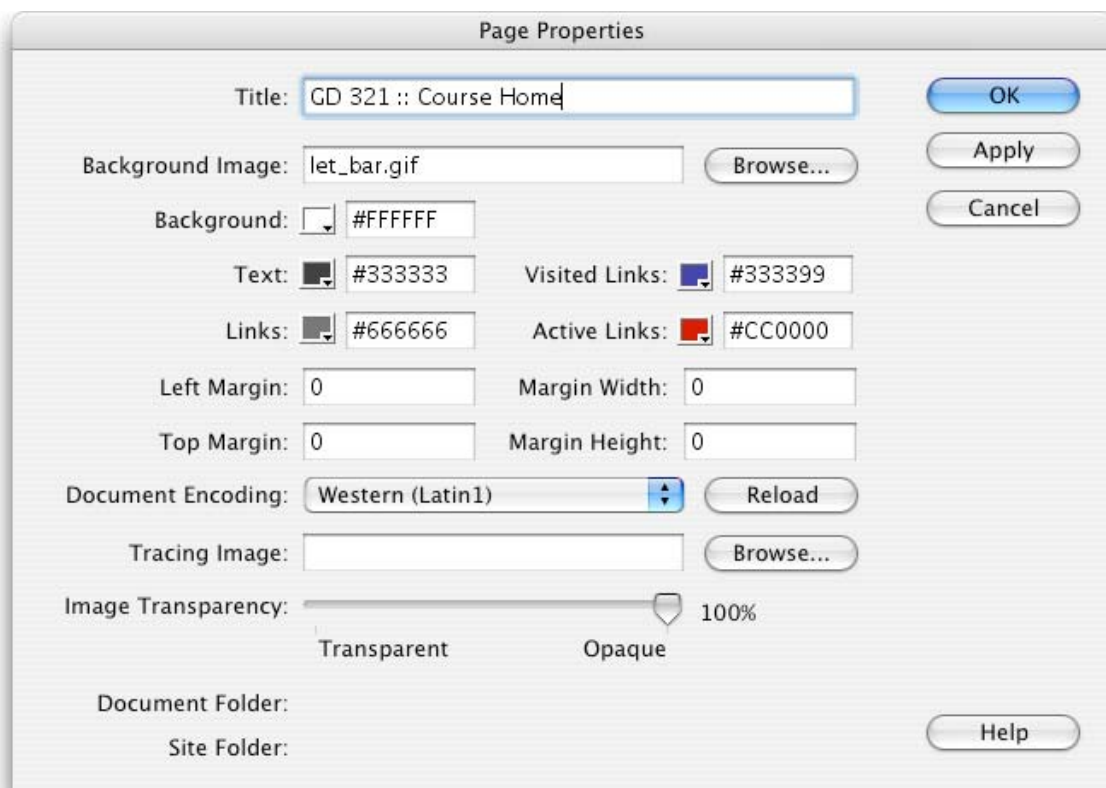
Dreamweaver Page Properties

Overview

- The Dreamweaver Page Properties dialog box allows you to set a number of different HTML page options that effect how certain elements of a page are displayed.
- All of these options (except for the Tracing Image) apply to all HTML documents, not just those created in Dreamweaver.
- Features:
 - Set the page title.
 - Set a background image and color for the page.
 - Set default colors for text and link states.
 - Control the page margins.
 - Apply a Tracing Image to the page for use during development.
 - Displays the current Document Folder and Site Folder settings.
- Where to find it:
 - Select **Modify > Page Properties**, or
 - Press Command (Apple key)+J on Macs, or Ctrl+J in Windows.

Dreamweaver Page Properties Window

- The Apply button allows you to set and preview your changes without having to close the Page Properties window.



Feature Descriptions

Page Title

- The Title field is the same title you can set in the Toolbar in layout mode. This controls the <title> tag.
- The title text appears in the browser window's title bar (see image to the right), and is also the name that is listed when a user bookmarks (or adds to favorites) the page.



Background Images

- Allow you to use an image as the background of your page.
- By default, background images repeat left to right, top to bottom.
- HTML elements always appear in front of the background image, and a background image always appears in front of the background color.
- Transparency in GIF images is recognized. The background color will show through any transparent areas of a GIF image set as the background image.
- Be sure to set your background color, even if you are using white. Not all browsers use white as the default background color.

Element Layering Order	front	HTML Page Elements
		Background Image
	back	Background Color

Default Text Colors

- Lets you set default colors for a variety of text types:

Text	The default text color for normal text.
Links	The default link color.
Visited Links	The color of a link after the user has visited the page the link refers to.
Active Links	The color of a link when a user clicks on it.

- You can either select a color by clicking on the Color box next to each field, or by manually typing in the hexadecimal color in the text box.

Page Margins

- Controls the left and top margin space in pixels between the browser window border and the page content.
- The default margin is 8 pixels from the left and 8 pixels from the top.
- If you want to remove the default margin, set the four margin boxes to 0.
 - All four must be set to 0 for this to work in all browsers.

Tracing Images

- Dreamweaver allows you to specify a JPEG, GIF or PNG as a temporary background image for use in assembling your page.
- Tracing Images only appear in Dreamweaver, not in a web browser.
- Adjust the transparency of the image to increase the visibility of a page's HTML objects.

Document Encoding

- Don't worry about the Document Encoding options unless you are creating pages in languages other than US English.

HTML Detail

- Where is the information stored?
 - Most of it is stored in the <body> tag
 - The page title is stored in the <title> tag
 - Document Encoding is stored in a <meta> tag
- The HTML for a page with the settings above looks like this:


```
<head>
  <title>Untitled Document</title>
  <meta http-equiv="Content-Type" content="text/html; charset=iso-8859-1">
</head>
<body bgcolor="#FFFFFF" background="left_bar.gif"
  text="#000000" link="#330066" vlink="#CC0000" alink="#CC0000"
  leftmargin="0" topmargin="0" marginwidth="0" marginheight="0">
</body>
```

Additional Page Properties Feature Descriptions

Properties	Description
Title	The title of your page is what will appear in the title bar of the Web browser and when your page is bookmarked. This name can contain as many characters as you want, including special characters, such as %(*!.
Background Image	If you want a background image for your Web page, you would specify it here. A background image can be any GIF or JPEG file. If the image is smaller than the Web browser window, then it will repeat (tile).
Background	Sets the background color. The values can be in hexadecimal format or by name, for example red, white, etc.
Text	Sets the default text color. It can be overwritten for specific areas of text.
Links	Sets the color for links. This option can be overwritten for specific links.
Visited Links	A visited link color specifies how the link will appear after a visitor has clicked it.
Active Links	The active link color specifies how the link will appear while someone clicks it.
Document Encoding	Specifies the language for the characters and fonts used in the document.
Tracing Image	Tracing images are used as guides to set up the layout of your page. They can be any GIF, JPEG, or PNG file.
Transparency	Sets the transparency level of your tracing image.
Left Margin	Sets the left margin value in pixels. This attribute is only supported in Internet Explorer 4.0 or later.
Top Margin	Sets the top margin value in pixels. This attribute is only supported in Internet Explorer 4.0 or later.
Margin Width	Sets the margin width value in pixels. This attribute is only supported in Netscape Navigator 4.0 or later.
Margin Height	Sets the margin height value in pixels. This attribute is only supported in Netscape Navigator 4.0 or later.

Table from Dreamweaver MX H•O•T Chapter 4, Page 112